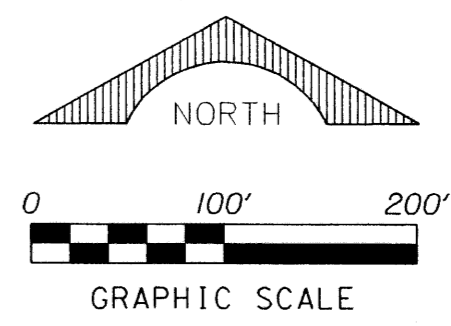


PERIMETER

SURVEYING & MAPPING
Prepared by: Jeff S. Hodapp, P.S.M.
Certificate of Authorization No. LB7264
951 Broken Sound Parkway, Suite 108
Boca Raton, Florida 33487
Tel: (561) 241-9988
Fax: (561) 241-5182

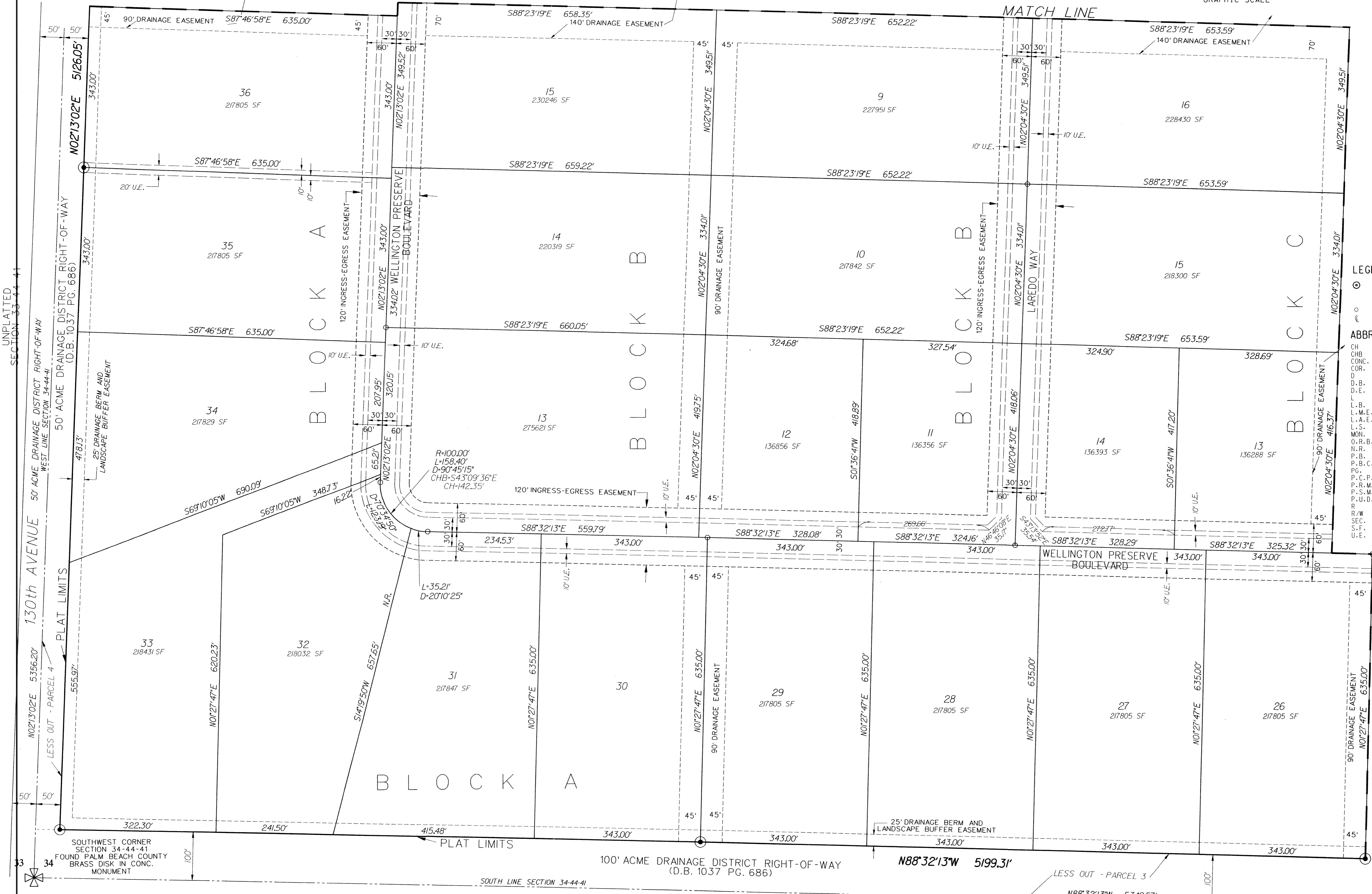
A PORTION OF THE ORANGE POINT P.U.D.
WELLINGTON PRESERVE
A PORTION OF SECTION 34, TOWNSHIP 44 SOUTH, RANGE 41, EAST,
VILLAGE OF WELLINGTON, PALM BEACH COUNTY, FLORIDA.
DECEMBER 2003



SEE SHEET 6

MATCH LINE

SHEET 5 OF 7

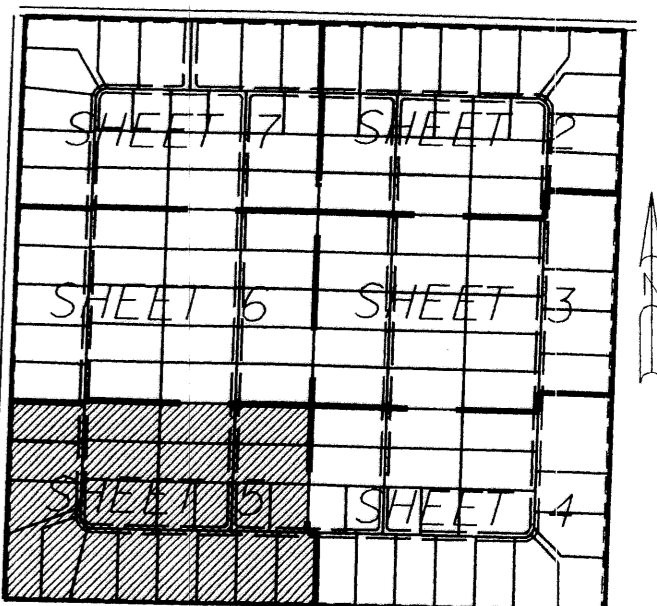


LEGEND:

ABBREVIATIONS:

- SET P.R.W. (UNLESS OTHERWISE NOTED) - ALUMINUM DISK IN 4"x4" CONC. MON. STAMPED •LB7264
- P.C.P. - CENTERLINE
- CH - CHORD BEARING
- CHB - CHORD BEARING
- CONC. - CONCRETE
- COR. - CORNER
- Δ - DELTA (CENTRAL ANGLE)
- DEED BOOK - DEED BOOK
- DRAINAGE EASEMENT - DRAINAGE EASEMENT
- ARCLNGTH - ARC LENGTH
- L.B. - LICENSED BUSINESS
- L.M.E. - LAKE MAINTENANCE EASEMENT
- L.A.E. - LAKE ACCESS EASEMENT
- L.S. - LICENSED SURVEYOR
- MON. - MONUMENT
- O.R.B. - OFFICIAL RECORDS BOOK
- NON-RADIAL - NON-RADIAL
- P.B. - PLAT BOOK
- P.B.C.R. - PALM BEACH COUNTY RECORDS
- P.G. - PAGE
- P.C.P. - PERMANENT CONTROL POINT
- P.R.M. - PERMANENT REFERENCE MONUMENT
- P.S.M. - PROFESSIONAL SURVEYOR & MAPPER
- P.U.D. - PLANNED UNIT DEVELOPMENT
- RADIUS - RADIUS
- R/O-W - RIGHT-OF-WAY
- SECTION - SECTION
- S.F. - SQUARE FEET
- U.E. - UTILITY EASEMENT

MATCH LINE
SEE SHEET 4



KEY MAP
NOT TO SCALE

UNPLATTED SECTION 33-44-41

130th AVENUE

33

34

SOUTHWEST CORNER SECTION 34-44-41 FOUND PALM BEACH COUNTY BRASS DISK IN CONC. MONUMENT

100' ACME DRAINAGE DISTRICT RIGHT-OF-WAY (D.B. 1037 PG. 686)

UNPLATTED GOVERNMENT LOT 3 TOWNSHIP 44 1/2 S. RANGE 41 E.

SOUTH ONE-QUARTER CORNER SECTION 34-44-41 (FOUND PALM BEACH COUNTY BRASS DISK IN CONC. MONUMENT - 0.2" N.)